

We can help you close your “skills gap” for advanced manufacturing

RAMTEC *overview*

Robotics & Advanced Manufacturing Technology Education Collaborative



A Proven Collaboration for meeting Ohio’s training needs in Advanced Manufacturing, Aerospace & Aviation, Polymers & Chemicals, Biohealth, Agribusiness & Food Processing and Automotive is now available for replication and sharing “Best Practices.”

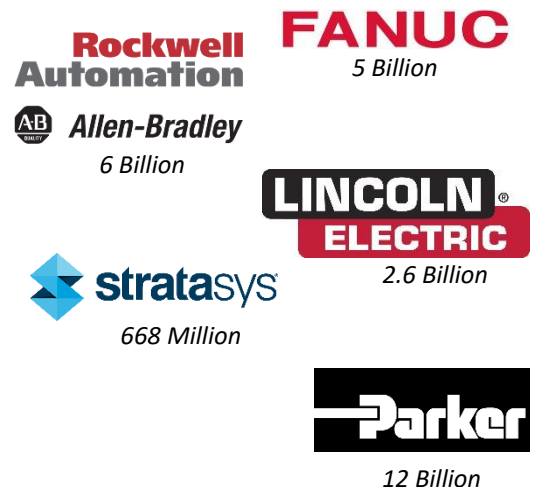
RAMTEC is a collaboration between Industry, Education and Government that began with a conversation between Honda of America, Tri-Rivers Career Center, Marion Technical College, and The Ohio State University-Marion. The success of Tri-Rivers’ RAMTEC in Marion, OH has led to the creation of 23 additional RAMTEC’s throughout Ohio. Thanks to Industry and Community Partnerships, and more than \$22 million in funding from Ohio’s Straight A Grants.

RAMTEC’s Mission is to grow Ohio’s economy by building a skilled workforce, partnering with effective training programs, and connecting Ohio employers with qualified workers in Automated and Advanced Manufacturing.

RAMTEC partnered with the six biggest companies in the WORLD to create curriculum, affordable prices to education, training, and certifications. **FANUC Robotics, FANUC CNC Machining, Parker Hannifin Hydraulics, Rockwell Automation/Allen Bradley PLC’s and Lincoln Electric Welding, and Stratasys 3D Printing** supply the highest percentage of Advanced Manufacturing equipment to the Automation Industry today.

RAMTEC develops, delivers and expands upon the partnerships of Industry, Education, and Ohio’s existing workforce initiatives. RAMTEC also delivers training that meets the needs of Manufacturers by focusing on specific training in grades 6 through post-secondary and incumbent workers that leads to **industry recognized credentials**.

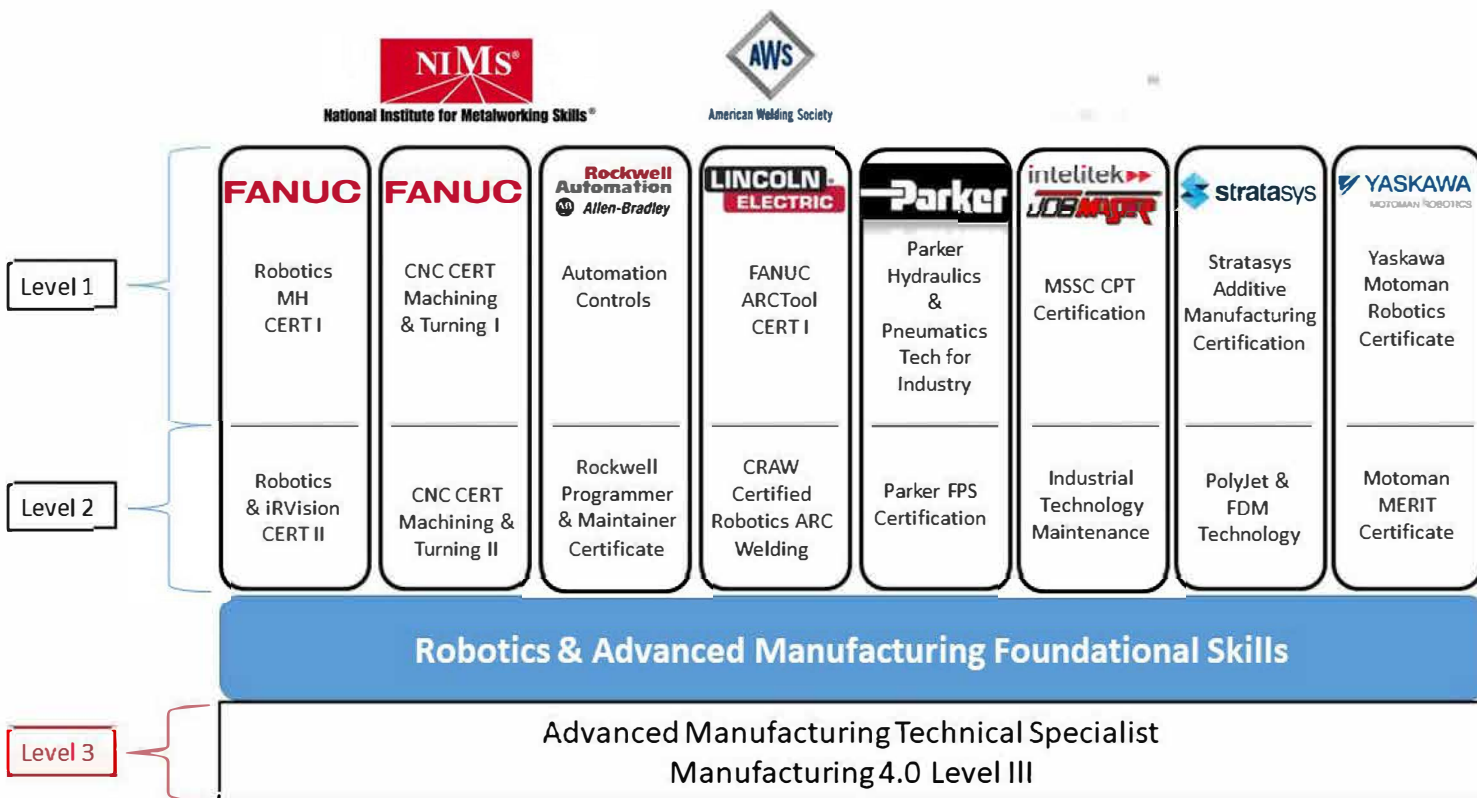
U.S. Install Total Annually



MAKE INDUSTRY CREDENTIALING A PART OF YOUR PROGRAM

Advanced Manufacturing Occupation Pathway

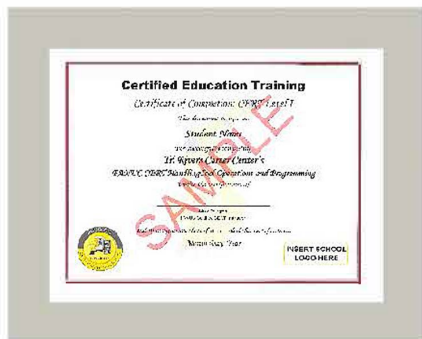
Industry Recognized Credentials – Give your students a competitive edge



FANUC ROBOTICS & CNC

ROCKWELL AUTOMATION PLC'S

YASKAWA MOTOMAN ROBOTICS



PARKER HANNIFIN HYDRAULICS / PNEUMATICS



- ◆ LINCOLN ELECTRIC WELDING (AWS)
- ◆ NIMS MACHINING
- ◆ MSSC CPT

Ohio | Department of Education
INDUSTRY RECOGNIZED CREDENTIALS

Talent shortage impact to the business

82%

of executives believe the skills gap will impact their ability to meet customer demand



of executives agree
**there is a talent shortage
in U.S. manufacturing**

The skills gap is widening

Over the next decade nearly 3 ½ million manufacturing jobs will likely be needed and

2015 **2 Million** 2025
are expected to go unfilled due to the skills gap

*Sources include:

Deloitte.  Institute

CEO's and manufacturing executives around the world identify talent-driven innovation as the number one determinant of competitiveness. Yet, manufacturing executives report a significant gap in their ability to find talent with required skills. RAMTEC has partnered with world leading companies that represent over 37 billion dollars worth of equipment used in industries throughout the United States and allowed RAMTEC's to utilize their equipment, curriculum and Instructor training resources within their school's facilities. This is what Industry Leaders are saying.

"The RAMTEC center will allow us to generate interest in the manufacturing field while helping students develop the skillsets necessary for a successful and limitless career in the manufacturing industry...Our facility is a fully integrated development and manufacturing facility, meaning that we utilize a wide variety of advanced manufacturing technology and skillsets...Our current and new employees will benefit from the manufacturing technology training at RAMTEC." – **SCHAEFFLER (LUK USA LLC)**

"Pepperidge Farm realizes the need for highly skilled and credentialed employees for advanced and specialized manufacturing jobs...RAMTEC reduces the skills gap and becomes a pipeline for highly skilled employees in advanced manufacturing." – **PEPPERIDGE FARM, INC.**

"Our company is committed to the training of the youth in the area through proven blended learning, e-learning, and hands-on training that exposes students to advanced manufacturing. The program emphasis is a continuing pathway towards industrial credentialing, certifications, competency-based laps of instruction and very important credits towards post-secondary certifications and college degrees." – **HONDA NORTH AMERICA, INC.**

"As our current employees retire we need to hire employees that are skilled in the aspects of hydraulics, welding, robotics, industrial electricity, programmable logic controls, programming and troubleshooting our numerous robots. With the equipment and curriculum that comes along with the RAMTEC program, we strongly feel that it will help prepare our new employees with the skilled trades that are needed for the 21st century." – **GENERAL MOTORS CASTING OPERATIONS PLANT**

"We have an enormous need for capable employees to replace the many retirements we are facing in the next five years. Both existing and potential new employees will benefit from training in technology fields such as robotics, programmable logic controllers and machine and/or robotic vision. – **THE WOOSTER BRUSH COMPANY**

Industry RAMTEC Ohio Partners

Allied Machine & Engineering
 American Showa, Inc
 ArtiFlex
 Autotool Inc
 Crown Equipment
 Detroit Diesel Remanufacturing
 Emerson Electric
 EnerFab, Inc
 FANUC CNC
 FANUC Robotics
 General Mills
 General Motors
 Honda of America
 Honeywell
 Houser Racing
 Kenworth
 Kiraly Tool & Die Inc
 KTH Engineering
 Lincoln Electric
 Mahoning Valley Manufacturers Coalition
 MIBA
 Milacron

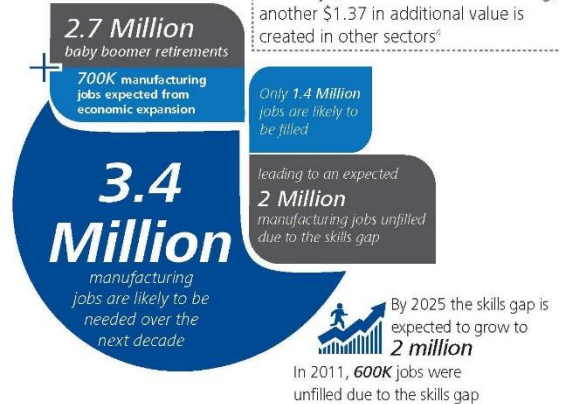
MTD Products
 National Machinery
 North Central Workforce Alliance of Ohio
 Parker Hannifan
 Pepperidge Farms
 Pride of the Hills Manufacturing
 Proctor & Gamble
 Quality Castings Co
 REMTEC
 Rockwell Automation
 Ross/Machinery
 Schaeffler
 Stanley Black & Decker
 Tekfor Inc
 The Wooster Brush Company
 Trenchor Ltd
 Tusco
 U.S. Yachiyo Inc
 Whirlpool
 Windsor Mold Group
 X-Mil, Inc
 Yaskawa/Motoman



The implications are significant

Every job in manufacturing creates another 2.5 new jobs in local goods and services³

For every \$1 invested in manufacturing, another \$1.37 in additional value is created in other sectors⁴



For additional information on RAMTEC visit us at: www.ramtecusa.com

If you would like additional information on the RAMTEC model, curriculum, skill sets, Industrial Credentials, room layouts or Industry based equipment pricing, please contact:

John Burkhardt- Partners Consultant- 419-566-3636